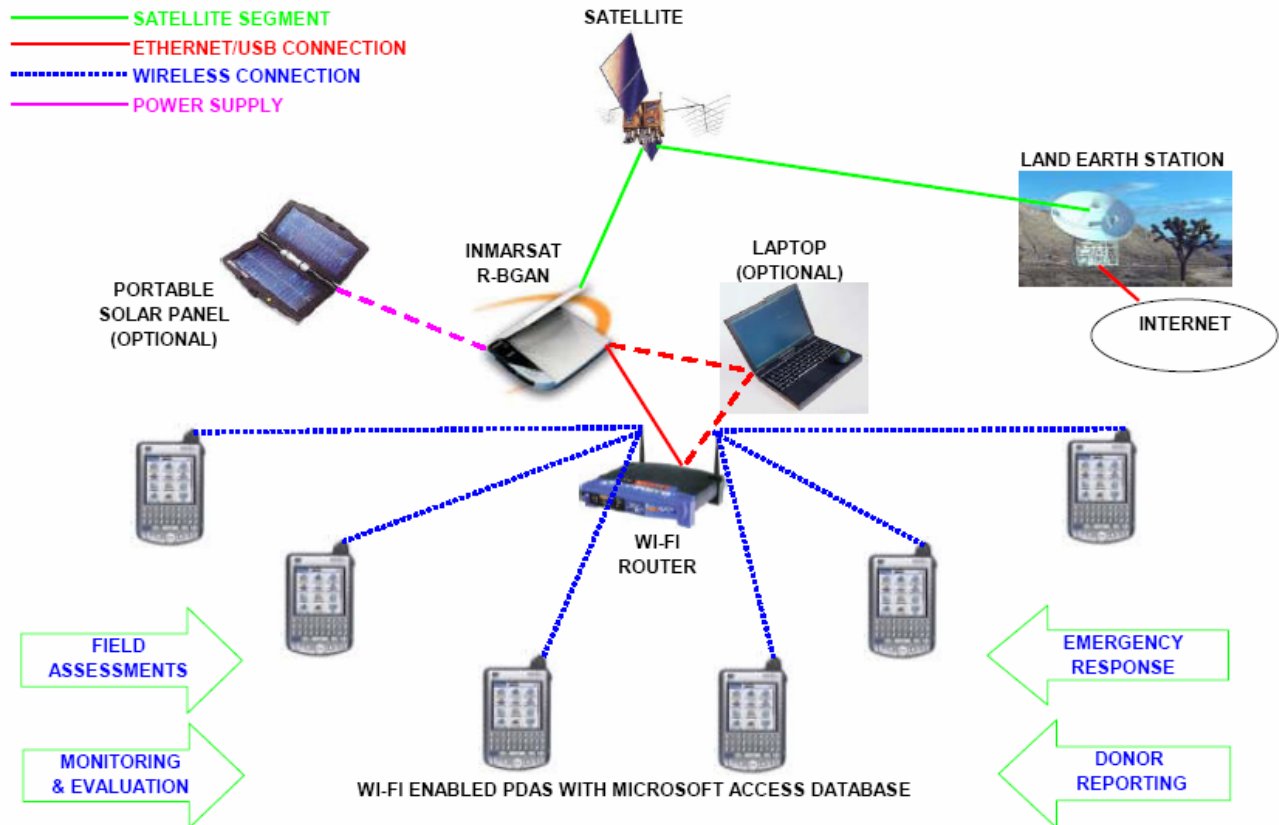


EMPOWERING FIELD STAFF

The portable field assessment model allows you to rapidly deploy teams to the field with the necessary tools to efficiently gather and communicate information back to your main office. This model utilizes advanced handheld devices and the compact RBGAN satellite modem to enable teams to operate in remote or underdeveloped areas. This flexible, low-cost solution can be configured for various aspects of development projects or for humanitarian and disaster relief efforts.



BROADBASED APPLICATIONS







Field Assessments – Your team has two weeks to do an assessment in Kazakhstan to determine the location of a new business opportunity center. Team members are deployed to various towns to collect information on their PDAs using customized software, which they can immediately share with their colleagues in Washington. There is no duplication of effort in data entry.

Backstopping staff can begin analyzing data rather than waiting on the field team to return. Field staff has more time to work on other aspects of the assessment and can complete the task faster than normal.

Monitoring/ Evaluation and Donor Reporting – Your organization has just completed the first phase of an agricultural assistance program. Team members are sent into the field to obtain an update on the status of program. Using customized fields on their PDAs they simply need to update certain fields in a database record for individual recipients. This information is automatically transmitted and updated to a central database via satellite. HQ staff generates reports for the donor as needed.

Emergency Response – In the aftermath of a natural disaster your team needs timely information on where relief is most required. How much food, water, and medicine are needed? Telecommunication infrastructure in the region has been virtually wiped out. With a rapid response flyaway kit the team can quickly collect data on their PDAs and relay this information to logistics support groups who then target the relief and deliver sufficient amounts of aid for those areas.

AFFORDABLE TOOLS

	<ul style="list-style-type: none"> - PDA with built-in wireless data capabilities (GPRS, BlueTooth, Wi-Fi) - Loaded with I-LINX customizable software that connects to a central database - Doubles as a GSM phone - Send and receive POP e-mail
	<ul style="list-style-type: none"> - RBGAN satellite IP modem - Low cost; high bandwidth - Global connectivity via INMARSAT - Lightweight, rugged design
	<ul style="list-style-type: none"> - Alternative energy source to power RBGAN - Small and lightweight
	<ul style="list-style-type: none"> - Share Internet connectivity with multiple team members using a Wi-Fi router. - Future models of RBGAN have built in WiFi capability so this may not be necessary.

For more information please contact us at:

Email: info@i-linx.net
 Tel: +1-202-232-0620
 Fax: +1-202-232-0621
www.i-linx.net



I-LINX LLC
 1010 Vermont Ave. NW
 Suite 514
 Washington DC 20005 USA